

Project Name

Renaissance Manchester
City Centre Hotel

Challenge

Renaissance Manchester City Centre Hotel is a luxurious 4 star hotel situated in the heart of Manchester City Centre and is part of the world renowned international hotel chain Marriott.

After the renovation of the ballroom earlier in the year Renaissance Manchester City Centre Hotel decided to continue the internal modernisation to the rest of the hotel.

Due to their location, the hotel wanted to create a house theme with reference to the industrial revolution of the early 19th century.

Collaboration between Newhey Carpets Limited and Raum Concept resulted in the design and supply of 11,500 square metres of bespoke carpet to run all the way through the hotel.

Colortec+ was chosen to feature in the guestrooms, bar, restaurant, lobby and Tudor rooms. Along with Colortec+, innovative Twist, Velvet and Stipple Yarns were incorporated into the bar, restaurant and lobby creating a sophisticated, classy appearance.

CASE STUDY



Carl Hogan

Carpet International
Flooring Specialists

"Our company has been servicing the hospitality sector with flooring for over 30 Years, concentrating on the luxury hotel market. By eradicating and foreseeing any problems before they arose by meticulous planning and preparation in conjunction with Newhey, we were able to ensure the installation met completely with the architect's vision."

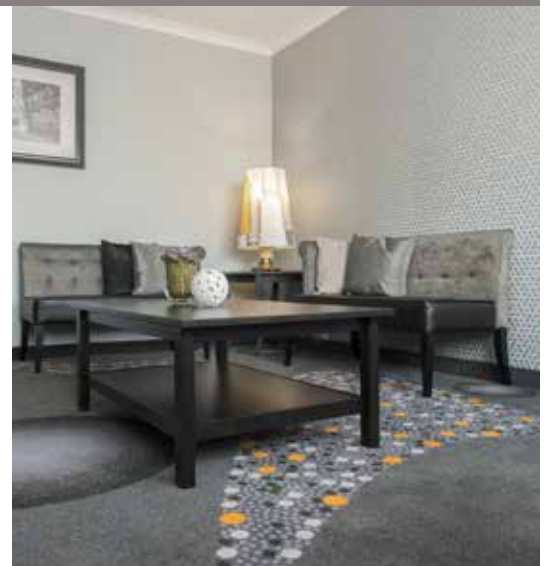


Design solution

The use of Colortec+ technology allowed for Twist, Velvet and Stipple Yarns to flow elegantly through the bar, restaurant and lobby rooms. The carpet designs were geared around circular shapes which allowed for a feeling of open space. The colours defined in the carpet reflect the historical period of the industrial revolution in Manchester, a theme Renaissance Manchester City Centre Hotel has displayed throughout the hotel.

Colortec+ is an advanced type of high speed patterned tufting technology allowing the creation of more complex designs. Although the theme is based around the industrial revolution, modern, futuristic elements have not been overlooked; a double helix formation leads guests to the specific parts of the guestrooms with smooth elegance. This was a feature of 2288 square metres of carpet which was supplied for the guest rooms.

Murals of historical buildings and carefully selected yarn on guestroom lamps are just some of the additional features that create a luxurious yet industrial feel within the hotel. Newhey's service and products allowed for a cost efficient, 5 star job.



Key Facts

- Over 11,500 square metres of carpet supplied
- Carpets supplied for guestrooms, corridors, bar, restaurant, lobby and the Tudor rooms
- Colortec+ incorporated with Twist, Velvet and Stipple Yarns used in bar, restaurant and lobby
- Newhey use supreme quality 80% wool/20% Nylon mix

Newhey Carpets Ltd, Gordon Street, Newhey, Rochdale, Lancs, OL16 3SL

T: 01706 846 375 E: enquiries@newheycarpets.co.uk W: www.newheycarpets.co.uk