

# DOLCE VITA

## LEATHERS



TIMELESS, LUXURY, ELEGANCE.

SEKERS

# ABOUT

DOLCE VITA  
LEATHERS



Dolce Vita Leathers, is a premium leather collection that embodies sophistication, high performance, and timeless luxury.

Made in Italy and renowned globally for its outstanding quality, craftsmanship and innovation, Dolce Vita Leathers features four exquisite designs: Como, Pompeii, Roma and Sorrento.

Each leather offers a unique texture and aesthetic, bringing its own character to upholstery.

With a thoughtfully curated palette of 40 colours, this collection strikes the perfect balance between timeless neutrals and bold statement hues.

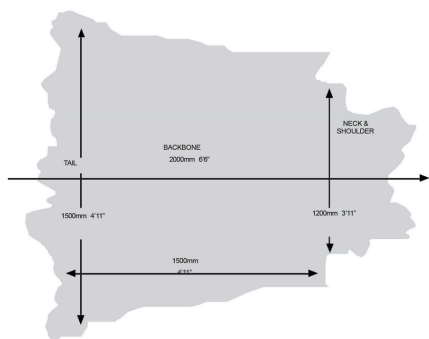
Together, these leathers offer remarkable versatility, catering to a wide range of design styles.

Boasting impeccable quality and durability, Dolce Vita Leathers is designed to meet the rigorous demands of the contract market. Each design complies with all relevant UK, USA & IMO standards for upholstery, ensuring suitability for luxury interiors and high-traffic environments within hospitality, leisure, and marine settings.

# HIDE INFORMATION

## HIDE SIZE

The diagram provides an example of the typical shape and size of a hide. Please note that every hide is unique and may vary in dimensions. When ordering leather, it's important to account for natural wastage due to the irregular shape of the hide.



## COMO



A smooth, sleek surface, delivering a polished and sophisticated look

## ROMA



A soft, slightly distressed natural grain that evolves beautifully over time.

## POMPEII



A richly textured natural grain, with fine creases and intersecting veins

## SORRENTO



An embossed texture, creating a unique pattern, ideal for modern interiors.

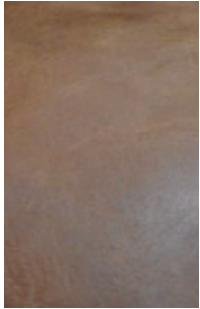
# NATURAL CHARACTERISTICS

## SHADE DIFFERENTIATION

Each hide is unique, with its own natural marks, scars, and variations in texture, all of which occur naturally throughout the animal's life. Factors like age, weight, and size can affect how dyes are absorbed, resulting in subtle tonal differences. In full grain hides, this can lead to variations in hue, which is completely normal and reflects the natural transparency of the hide.

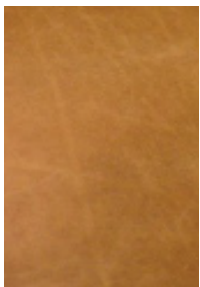


## VEINS



Just as veins are visible beneath human skin, vein lines can also appear on finished leather. These lines form when bacteria are drawn to any remaining nutrient rich blood within the original blood vessel pathways before the leather manufacturing process begins. Over time, the skin wears away, revealing the delicate pattern of these natural pathways.

## NECK GRAIN



As grazing animals stretch and bend their necks daily, they develop creases and growth marks on the back of the neck. As the animal ages, these lines become more pronounced, adding a natural texture to the finished leather.

## STRETCH MARKS

---



Similar to humans, animals develop stretch marks as they grow. These natural markings are more commonly found in female hides, particularly due to childbirth.

## SKIN CONDITIONS

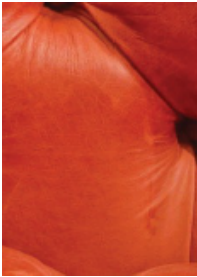
---



Animals can experience skin conditions such as psoriasis and eczema. These can result in non uniform textures on the leather. Insect bites and parasite damage may also leave distinct marks and scars, further contributing to the individuality of each hide.

## SCARS

---



Throughout their lives, animals may encounter objects such as barbed wire, horns, or rough terrain that can leave scars on their skin. Additionally, human intervention, including branding for identification or medical procedures, can result in permanent markings. Once healed, these scars may appear slightly raised but retain their structural integrity, adding to the unique character of each hide.



# COLOURS

## DOLCE VITA LEATHERS



POMPEII 06 SABLE & COMO 10 FRAPPE

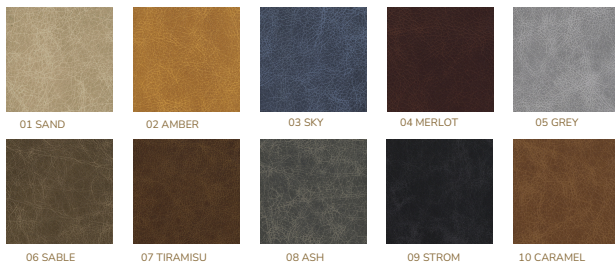
### COMO



### ROMA



### POMPEII



### SORRENTO



# CARE INSTRUCTIONS

DOLCE VITA  
LEATHERS

Pigmented leathers, popular for furniture, are coated with a pigmented polyurethane top layer for uniform colour and thickness. This layer can be embossed or left as full grain. These leathers offer high protection and are easy to clean and maintain.

## REMOVE ABRASIVE MATERIAL

Regular vacuuming is essential for leather care, as it removes surface dirt that can cause abrasion. Dirt accumulates in the leather's grain pattern, and rubbing against this buildup can damage the leather. A soft cloth for dusting also helps maintain the leather's condition.

## WHAT TO DO WITH WET STAINS

Gently blot and remove any excess liquid or puddles using a damp, lint free cloth. DO NOT use household cleaning products. Any solvent based cleaners can break down the leather's finish, causing damage. For any residual stains, use leather cleaning wipes to gently remove the stain from the leather. Most stains can be removed effectively if addressed promptly and with care.

## HANDLING UNNOTICED DRY OR LONG-TERM STAINS

If the area is dry to the touch, apply leather cleaning wipes by rubbing in a gentle circular motion.

DO NOT use nail varnish remover, acetone, bleach, household detergent, hair spray or other cleaning products other than a damp cloth. Most household cleaners contain solvents designed to dissolve contaminants, making them easy to wipe away. However, these solvents can also damage and dissolve the leather's finish.

# TECHNICAL INFORMATION

## Fire Resistance



Upholstery:	BS 7176: Medium Hazard BS 5852: Part 2 Ignition Source 5 (Crib 5) When tested over CMHR foam density approx. 35kg/m3	
IMO:	IMO FTPC Part 8 (Upholstery)	
USA:	NFPA 260 Class 1 (UFAC) CAL 117/13	
Composition:	Como - Leather (average hide size) 4.4 – 5m2 Pompeii - Leather (average hide size) 4.1 – 4.8m2 Roma - Leather (average hide size) 4.6 – 5.1m2 Sorrento - Leather (average hide size) 4.2 – 4.8m2	
Weight:	Como 600g/m2 Pompeii 800g/m2	Roma 800g/m2 Sorrento 600g/m2
Thickness:	Como 0.9 – 1.1mm Pompeii 1.0 – 1.2mm	Roma 0.9 – 1.1mm Sorrento 0.9 – 1.0mm
Flex Endurance:	Como 30,000 flexes Pompeii 50,000 flexes	Roma 20,000 flexes Sorrento 50,000 flexes
Rub Fastness:	Como 80 wet / 500 dry Roma 20 wet / 50 dry Pompeii 80 wet / 500 dry Sorrento 80 wet / 500 dry	
Tear Strength:	20N	
Abrasion (Taber):	CS10 Wheels/1000 Cycles/500g	

# SUSTAINABILITY

## DOLCE VITA LEATHERS

---

Beyond exceptional aesthetics, Dolce Vita Leathers represents our commitment to sustainability and ethical production. Italy is at the forefront of eco-friendly leather manufacturing, pioneering innovative techniques to minimise chemical use and enhance water treatment processes.

This collection is made at a certified tannery that meets the stringent UNI11427:2015 environmental standards, ensuring reduced chemical and water consumption, lower emissions, and maximised energy efficiency with a strong focus on renewable energy.

Impressively, 98.2% of the water used in production is purified and returned to the environment, demonstrating a dedication to environmental stewardship.





DOLCE VITA  
LEATHERS

[WWW.SEKERSFABRICS.CO.UK](http://WWW.SEKERSFABRICS.CO.UK)

Tel: +44 (0)1946 517 501

Sales: [sales@sekers.co.uk](mailto:sales@sekers.co.uk)

Export: [export@sekers.co.uk](mailto:export@sekers.co.uk)

Head Office  
7A Nobel Rd  
Wester Gourdie Industrial Estate  
Dundee  
DD2 4UH