



The art of care

NEWMOR
WALLCOVERINGS SINCE 1967

Newmor specialise in commercial quality, wide-width fabric backed vinyl wallcoverings. We have thousands of stocked surfaces, customisable digital prints, designer collaborations and an in house digital department. We take pride in manufacturing all of our products at our factory in Wales, UK. We use traditional techniques alongside cutting-edge technology to bring you the best in design and quality.



Fabric backed vinyl wallcoverings are the perfect solution for healthcare interiors. With so many combinations of design, colour, texture and finish, the options are limitless.

Vinyl wallcoverings are highly durable and suitable for high traffic areas. Washable and scrubbable, cost effective when compared with paint, quick and easy to install and sustainably manufactured.

Hygiene



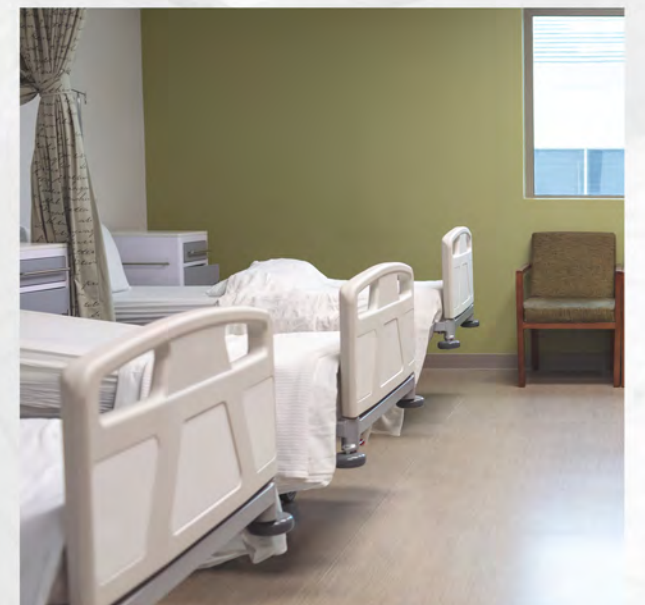
Able to withstand most staining, our vinyl wallcoverings can be scrubbed or washed down with detergents and dilute chlorine releasing agents. Additionally all of the designs in the Healthcare collection contain Ultra Fresh.

Ultra-Fresh is an antimicrobial technology engineered to provide highly effective, broad spectrum activity against bacteria, fungi and algae which may cause odour generation, discoloration and product degradation. Ultra-Fresh treated articles have also been proven to have significantly lower dust mite populations as compared to untreated articles, resulting in fewer dust mite allergens.

Ultra-Fresh has had to pass the most stringent testing procedures for safety and efficacy to meet international regulatory guidelines. Ultra-Fresh is US EPA registered, BPR compliant and Oeko-Tex listed.

Safety

Our products are manufactured to exceed all relevant British and international performance and fire safety standards. We also provide light reflective values for each colourway to aid visual differentiation.



Fire rating - Class 'O' to the requirements of Approved Document British Building Regulations, Euroclass B. Class A ASTM E-84.



Durability

Engineered to withstand impact, abrasion, high volumes of traffic and frequent cleaning, our wallcoverings are exceptionally durable, lasting at least 12-15 years when properly installed. Due to the solid vinyl surface, which is coloured all the way through, dents and scratches don't affect the appearance. Also resistant to the harsh, regular cleaning required in healthcare interiors, our vinyl wallcoverings can be scrubbed or washed down with detergents and dilute chlorine releasing agents.

Budget

Installation of vinyl wallcovering is efficient and cost effective and during the first 15 years of use there are no additional costs to be expected. Painted surfaces need to be refreshed and repainted regularly meaning that over 15 years wallcoverings are a more cost effective option.

Average life cycle cost (per square meter)



Sustainability

Newmor is committed to healthier indoor air quality, manufacturing and product transparency and reducing environmental impact. We are constantly working on innovative ways to reduce our waste and energy usage. Our wallcoverings are made to last for at least 12-15 years and this longevity enhances the life cycle benefit and reduces the environmental impact of their manufacture. Visit newmor.com for our full environmental policy.

TEDLAR®

Tedlar® Wallcoverings are protected by a film that provides an impervious barrier against stains, making it easy to wipe away everything from graffiti to betadine.

Our Tedlar® coated wallcoverings can withstand even the harshest industrial cleaning products, including bleach and alcohol-based solvents. It is even unaffected by strong acids, bases and acetone.

Tedlar® wallcoverings have low smoke ratings and do not readily burn or support combustion, making it one of the safest materials designed for interiors.

Third-party laboratory testing has proven that Tedlar® does not support or provide nutrients to assist in mould and bacteria growth, including E. coli.



Newmor Shield

Newmor Shield is a super durable, antimicrobial, Tedlar® coated wallcovering offering the highest durability and protection for healthcare interiors. Perfect for high traffic areas such as corridors, receptions and waiting areas.

- 800gsm
- Osnaburg backing
- Tedlar® coated
- Ultra Fresh antimicrobial

Meadow

Neutral shades are peaceful, quiet and secure.



MDW 007 (LRV 65)



MDW 111 (LRV 47)



MDW 107 (LRV 43)



MDW 011 (LRV 60)



Newmor Custom - Meadow



MDW 006 (LRV 40)



W 50912 (LRV 75)



Lavender

Purple shades are calming and uplifting.



Tedlar LVD 0903 (LRV 65)



Newmor Custom - Lavender



LVD 005 (LRV 84)



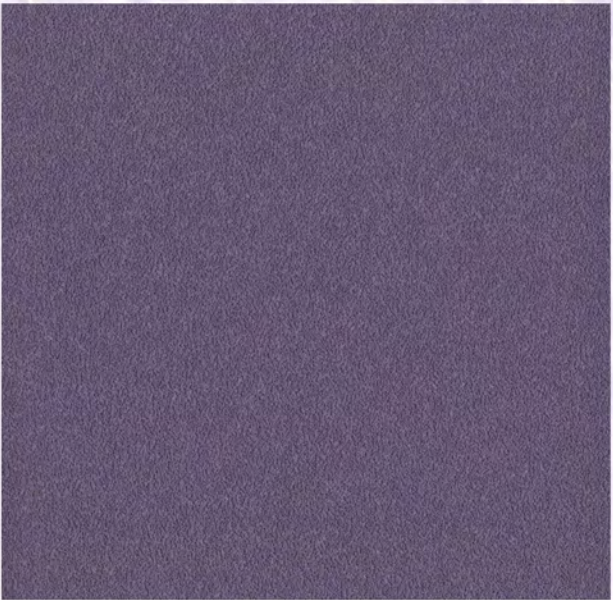
LVD 08 (LRV 44)



LVD 015 (LRV 25)



LVD 14 (LRV 10)



LVD 2013 (LRV 25)



Blossom

Warm, natural pinks and peaches calm and nurture.



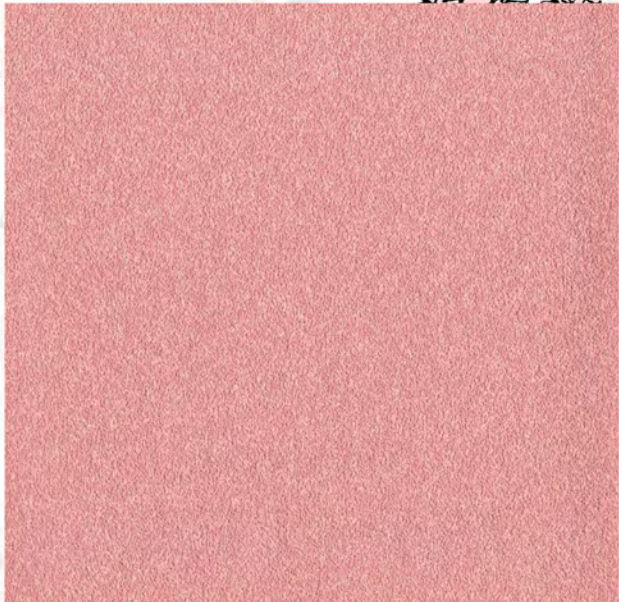
Tedlar BLS 01 (LRV 85)



BLS 11 (LVR 52)



BLS 101 (LRV 26)



BLS 0706 (LRV 56)



BLS 112 (LRV 67)



BLS 128 (LRV 46)



Newmor Custom - Blossom

Forest

Organic hues promote peace, balance and harmony.



Tedlar FST 1305 (LRV 49)



FST 2015 (LRV 17)



FST 008 (LRV 37)



FST 121 (LRV 30)



FST 001 (LRV 77)



FST 005 (LRV 17)



Newmor Custom - Forest

Sky

Crisp blues and cool greys are refreshing & tranquil.



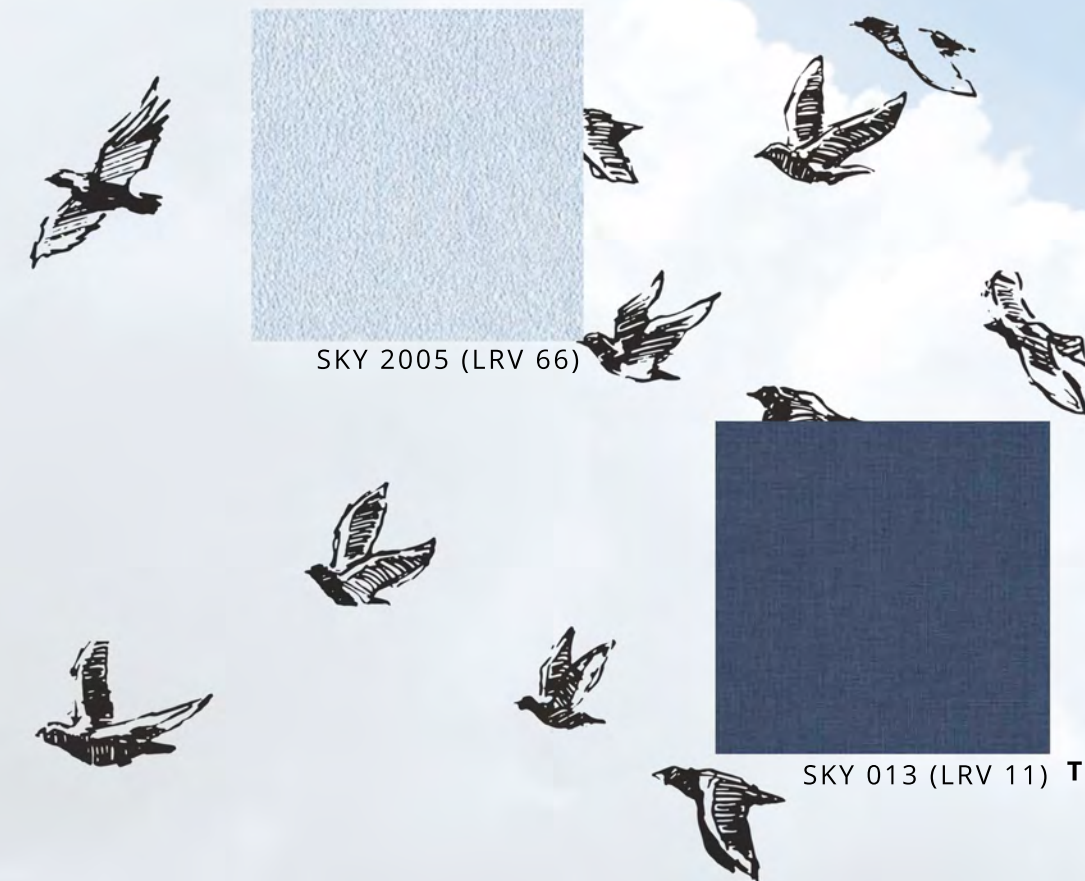
SKY 003 (LRV 19)



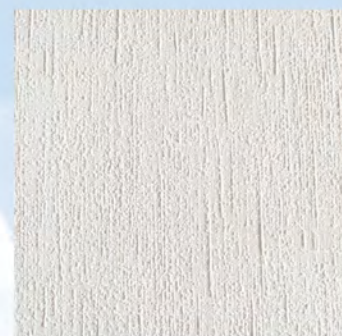
SKY 121 (LRV 84)



SKY 2005 (LRV 66)



Newmor Custom - Sky



SKY 001 (LRV 85)



SKY 013 (LRV 11)



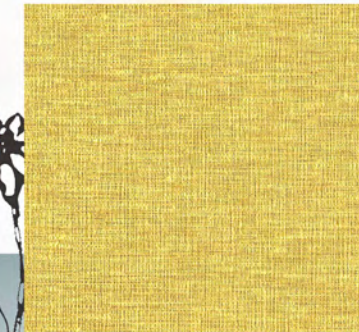
Tedlar SKY 1004 (LRV 58)

Chamomile

Yellows promote happiness, optimism and energy.



CML 120 (LRV 39)



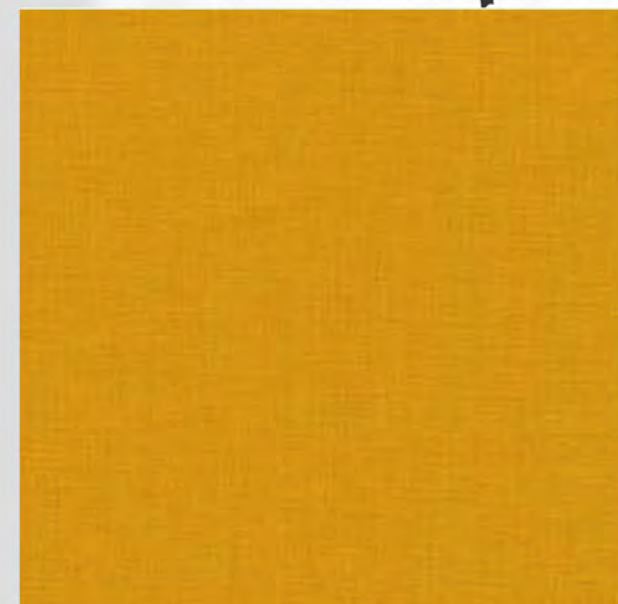
CML 125 (LRV 77)



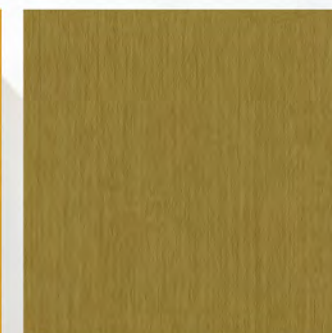
Tedlar CML 0303 (LRV 68)



Newmor Custom - Chamomile



CML 017 (LRV 27)



CML 010 (LRV 26)



CML 127 (LRV 73)



Dry Erase Solutions

Write 'n' Wipe wallcovering is a dry-erase wallcovering supplied by the meter. Installation is as easy as applying any wide-width wallcovering. Write 'n' Wipe can be used in endless ways - vertically or horizontally, on curved walls, full walls, framed and on folding doors.

Great for meeting rooms, wards, consultation rooms, reception areas and many more.

Window Graphics



Print your own imagery, send us a brief, choose an image from an online library, or choose one of our own designs – we can print onto a wide range of clear and opaque films which can be easily applied on site. Clear, frosted, opaque and Demi-view available.

Digital and Bespoke



Send us your artwork, search for an image from a stock library, or visit newmor.com and choose one of our Newmor Designer or Newmor Custom designs. Alternatively, you can give our studio a brief and we can create a bespoke design that's perfect for your project. Our state-of-the art facilities allow us to faithfully reproduce your design onto any of our wallcoverings including metallics and textured bases.



Our Newmor Designer and Newmor Custom collections offer the opportunity to choose unique designs which have been developed by our in-house design team. All of the designs are fully customisable.



Case Studies

It's proven that the right surroundings can aid the recovery of patients and improve staff and patient morale. The following case studies are examples of how our wallcoverings can contribute to better design in healthcare environments.

Profamilia Specialist Hospital Rzeszów, Poland

Our wallcoverings were used at this family hospital to create a calming home from home atmosphere.



Private Hospital, London

During refurbishments of its reception area, corridors and waiting rooms this London Hospital used our wallcoverings to add areas of colour and interest. Also key to their wayfinding strategy, zones were highlighted with different, nature based colours.



Anchor Care Homes

Mayflower Court is a contemporary 72 bed care home with a dedicated dementia care facility. The brief was that two of the floors would be specifically set up for those living with dementia.

The two dementia floors were designed to have two-tone patterns where the shades were less than ten LRV points apart. The subtle patterns add interest to the room without potentially distressing someone living with dementia. On the other two floors the brief was to have a 'hotel' feel, allowing contrasting colours to be used.

'Newmor's in-house design and manufacturing meant we could use the same patterns in the dementia transparent rooms as the rooms for frail and elderly residents with just the tones altered. So, creating a beautiful and cohesive interior space for all residents to enjoy.' - Sophie Weeks, Devon Interiors



Birmingham Children's Hospital

The hospital has undergone extensive refurbishment to accomplish a welcoming, friendly and stimulating environment for its patients. We supplied bespoke wallcoverings and window graphics for reception areas, hallways, waiting rooms and treatment rooms. The designs range from exciting, dynamic graphics to calming and reassuring biophilic imagery.



Technical Specifications

Maintenance:

Fully washable and in most cases products can be scrubbed repeatedly to remove any marks without damaging the product itself. Most products are also able to withstand the use of chlorine releasing agent solutions.

Roll size:

130cm x 30m - cut lengths available

Fire Rating:

Class 'O' to the requirements of Approved Document B of the British Building Regulations
Euroclass B Class A ASTM E-84

Adhesive:

Fabric backed vinyls - Newmor Heavy.
Varies with substrate - please enquire.

Bacteria Resistance:

Contains Ultrafresh antimicrobial agent.

Light Fast:

Excellent Light Fastness
BS EN ISO 105-B02 7/8

LRV = Light reflective value

Samples:

Larger samples are readily available on request.

Specifications:

Conforms to requirements of BS EN 15102, BS EN 259 and Federal Specification CCC-W-408A & C CFFA Quality Standard for Vinyl Coated Fabric Wallcoverings CFFA-W-101A

Stain/Chemical Resistance:

Pass ASTM D-1308-1987 Federal Spot Test. Resistant to temporary staining of oils, fats, mild acids and alkalis.

Quality Assurance:

Our management systems and production procedures comply with ISO 9001, the internationally recognised Quality Standard.

Availability:

Every product stocked in depth.
5.00pm deadline for next day delivery.
(UK only)

Origin:

Designed, coloured, manufactured and stocked in the UK.

Warranty:

Newmor offers a five year warranty against manufacturing defects.
Full details available on application.

newmor.com

sales@newmor.com

+44 (0)1938 551 990

NEWMOR
WALLCOVERINGS SINCE 1967