








# SEKERS

## ROCHELLE (3 Pass FR Blackout)

### FIRE RESISTANCE

Curtains:	BS 5867: Part 2, Type B B1
USA:	NFPA 701
Colour Match:	Colour may vary from one batch to another. If an exact match is required, please ask for a stock cutting.
Composition:	56% Polyester 44% Polyacrylic
Width:	140 cm
Weight:	430 g/m <sup>2</sup>
Usage:	Blackout contract curtains
Cleaning:	    

# SEKERS

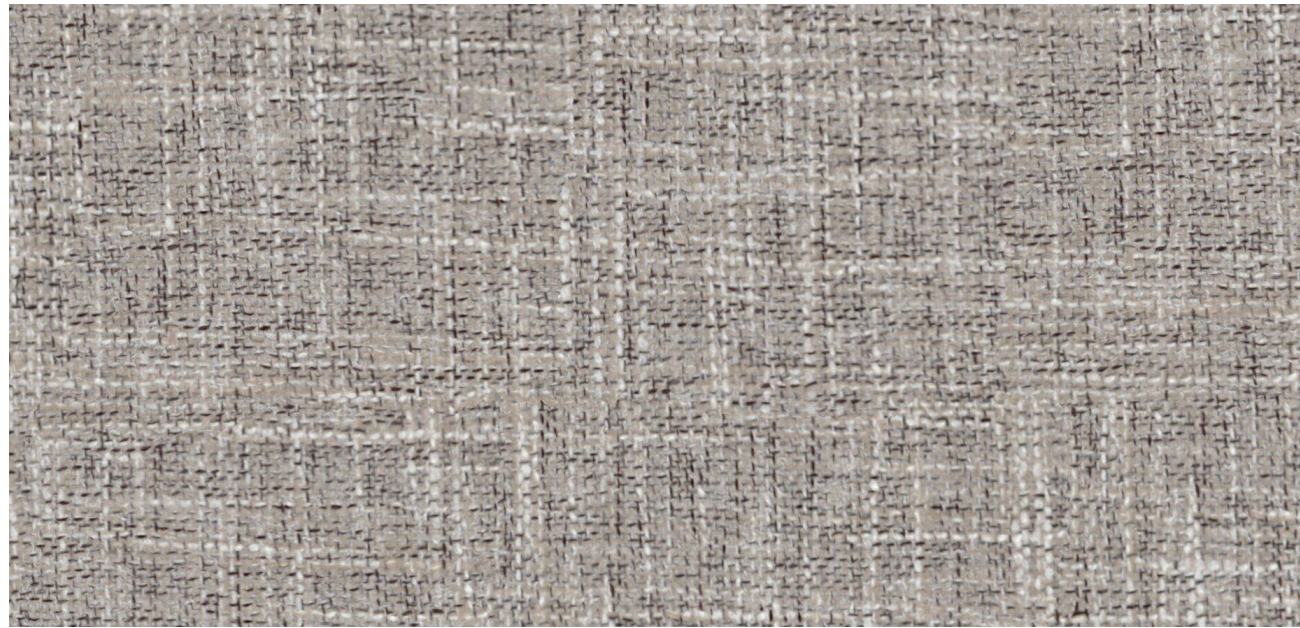
## ROCHELLE BLACKOUT CURTAINS



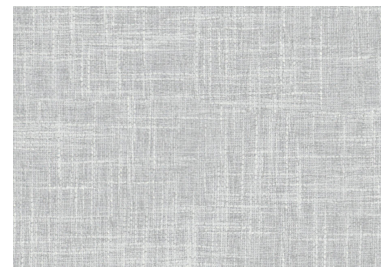
**ALL SALES AND EXPORT ENQUIRIES TO:**  
Sekers Fabrics Limited  
7a Nobel Road, Wester Gourdie Industrial Estate  
Dundee, DD2 4UH  
Sales Tel: +44 (0) 1946 517501 Sales Fax: +44 (0) 1946 517502  
**UK & Ireland Email:** [sales@sekers.co.uk](mailto:sales@sekers.co.uk) **Export Email:** [export@sekers.co.uk](mailto:export@sekers.co.uk)  
Website: [www.sekersfabrics.co.uk](http://www.sekersfabrics.co.uk)







16 COCONUT



08 FEATHER GREY



09 MID GREY



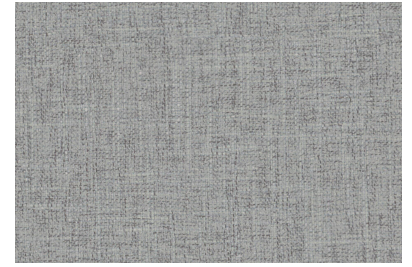
07 RHINO



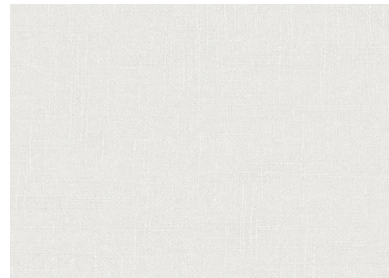
15 RABBIT



14 STONE



13 THUNDER



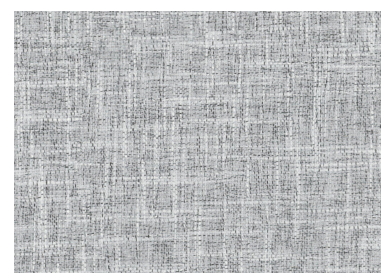
26 CHALK



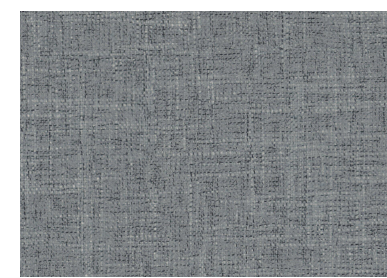
27 IVORY



25 LINEN



10 TUXEDO



12 PEWTER



11 SHADOW



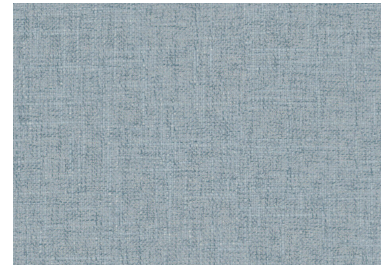
24 VANILLA



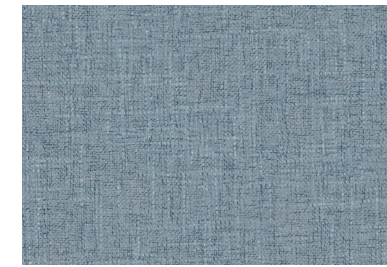
20 SAND



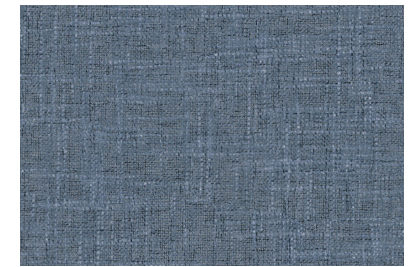
21 HAY



03 SKY



02 WATER



01 DENIM



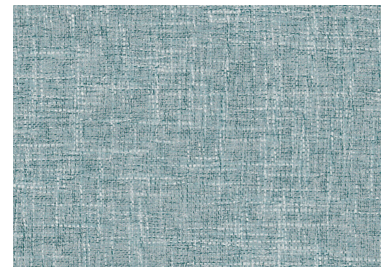
28 ECRU



23 SHELL



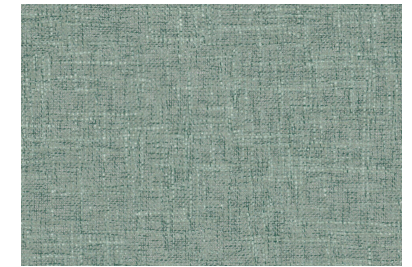
22 MACAROON



04 LAGOON



05 LOVAT



06 SPRING



19 SALMON



18 BLUSH



17 MINK



29 PEBBLE



30 RAFFIA